



Configuración USB – RS-232 Lector SL3100 – SL5800 – SL6100

Numero Azul: Configuración RS-232

Numero Rojo: Configuración USB

System Settings

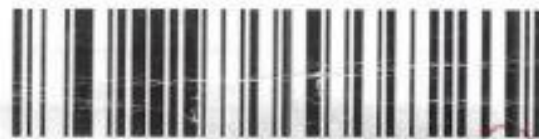


Factory Defaults



Version

Communication Interface



USB Mode



TTL/RS232 Mode*



Other Settings



Enable All Barcode



Enable All 1D Barcode



Enable All 2D Barcode



Read Regular And Inverse
Barcode

Suffix Settings



Add CR

4

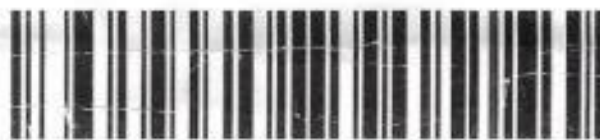


Add CR+LF*

4



Add Tab(HT)



NONE